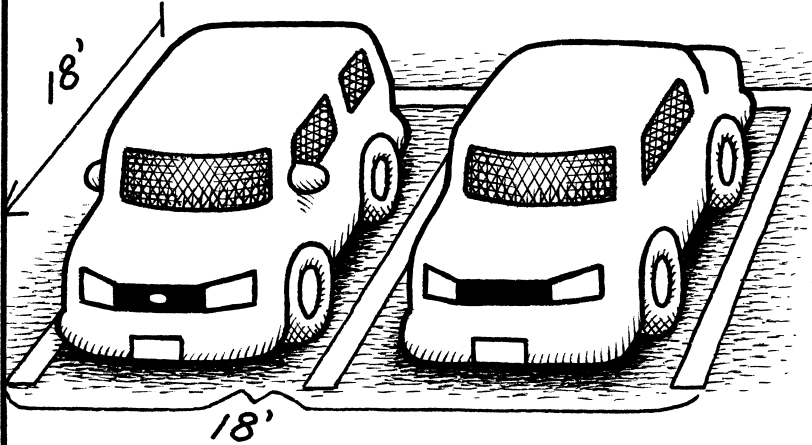


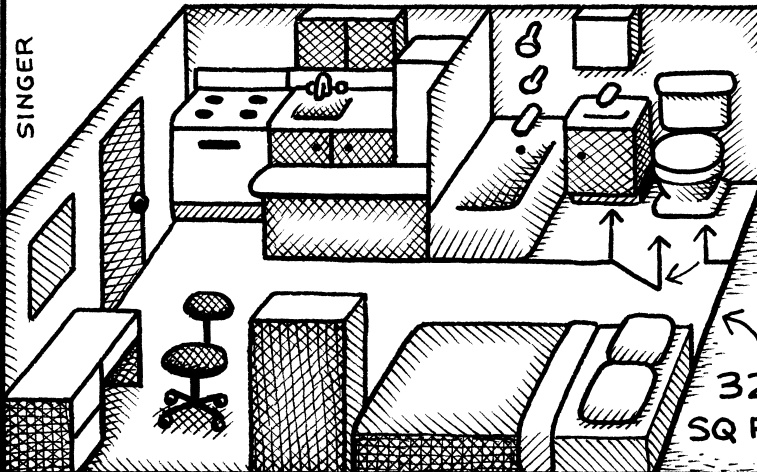
Q: WHAT'S A BETTER CITY BUILDING REQUIREMENT?

1. PARKING SPACES



- DOESN'T ADD TO CITY'S TAX BASE
- 2 SPACES USE UP 324 SQ FT
- INCREASES TRAFFIC AND POLLUTION

2. LOW INCOME APARTMENTS



- ADDS TO PROPERTY TAX BASE
- REDUCES HOMELESS POPULATION
- REDUCES POLLUTION AND CAR TRAFFIC.